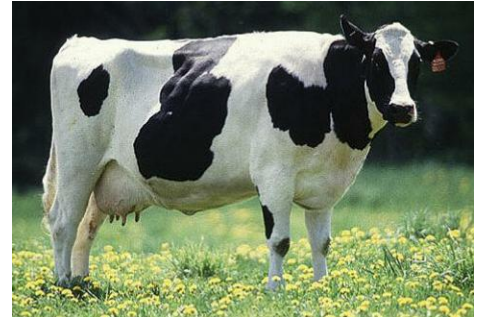


Rotational Grazing/Pasture Management Farmer-to-Farmer Technical Advisement *Capital RC&D*

Contact: Capital RC&D Area Council, Inc., Susan Richards (717) 241-4361 or srichards@capitalrcd.org

How does it work?

- Experienced “Grazing Advisors” who are current or retired Livestock farmers provide technical advice for both beginning and experienced farmers with questions related to pasture improvement, fencing, grazing planning, weed management, soil health, forage species selection and other grazing-related questions.
- Advisors have a variety of skills and 90+ years of experience including working with grass-based beef, dairy, goat, sheep and horse operations and assisting producers in improving their pastures and transitioning the operations to more intensive grazing.
- Contact Capital RC&D to schedule an advisor visit. We can match you with an advisor who will contact you to schedule a visit and discuss any questions.



Who can receive the technical assistance?

Producers located in the Chesapeake Bay watershed of Pennsylvania, including much of central Pennsylvania.

Is there a cost?

There is no cost to the farmer. A grant from the National Fish and Wildlife Foundation (NFWF) reimburses the Grazing Advisor for their time and travel.

Who do I contact?

Capital RC&D Area Council, Inc.
Susan Richards (717) 241-4361
srichards@capitalrcd.org

