

*Capital Resource Conservation and Development Area Council
(Capital RC&D)*

New Council Member Orientation

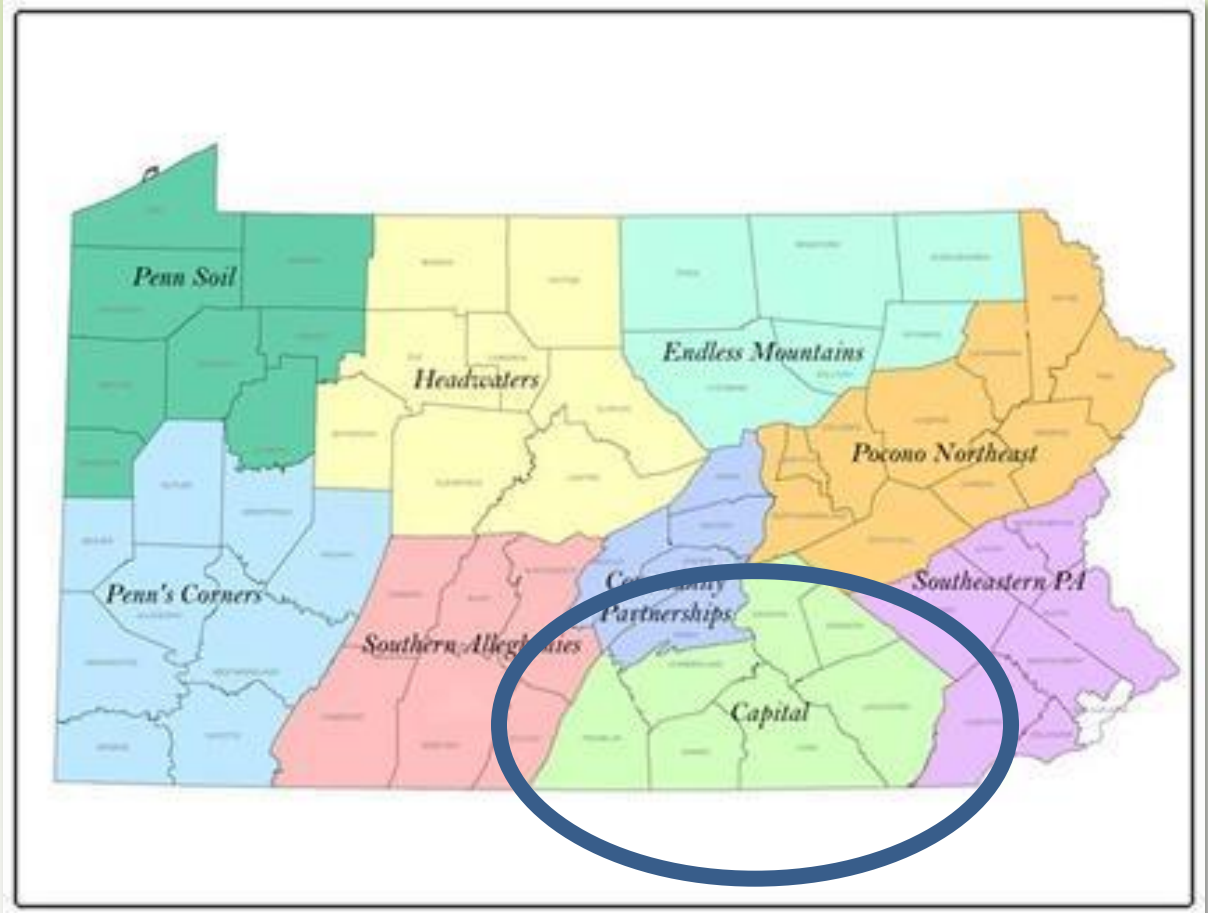
2024



Counties Served

Seven counties in south central Pennsylvania

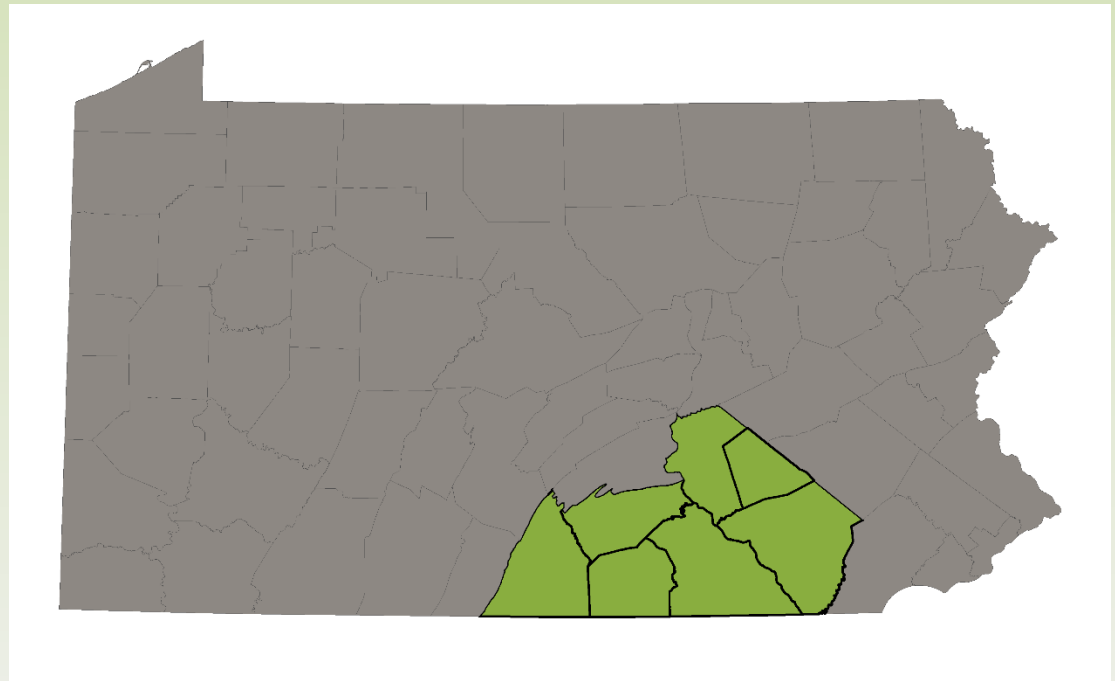
- Adams
- Cumberland
- Dauphin
- Franklin
- Lancaster
- Lebanon
- York



Counties Served

Seven counties in south central Pennsylvania

- Adams
- Cumberland
- Dauphin
- Franklin
- Lancaster
- Lebanon
- York



Vision Statement

The Capital RC&D Area Council envisions a clean, healthy region that preserves and conserves natural and community resources and uses resources for responsible/sustainable economic development



Mission Statement

Capital RC&D strives to improve the quality of life in our region by working with stakeholders to protect the natural resources and economic vitality of our community.



Organizational Information

- 501 (c)(3) Nonprofit organization
- Founded in 2003
- One of nine original RC&D Councils in Pennsylvania. Four additional councils remain active.



Local Involvement and Representation

- Council members are appointed by the **County Commissioners** and **County Conservation Districts**.
- Three voting members per county
- Council facilitates communication between counties and stakeholder groups



Resource Conservation and Development Program History

- National RC&D program established in the 1962 Farm Bill under USDA/NRCS
- Continues to be a line item in the Farm Bill although unfunded since 2011
- Approximately 200 -250 Councils nationwide
- Individual RC&D Councils are separate 501 (c)(3) corporations.

Board Responsibilities

Leadership – Determine and update mission and policies of the organization. Develop work plans to implement the mission. Provide a link with key groups with similar and complementary missions.

Oversight – Monitor operations of the organization to ensure they support the mission, legal obligations and the policies of the organization.

Stewardship – Set financial goals and budgets and make sure appropriate audits are completed.

Current Committees

- Executive Committee
- Resource Conservation and Development (Program) Committee
- Business Affairs Committee
- Planning and Board Development Committee
- Community and Government Relations Committee

Board Resources

All policies and materials appear on the Capital RC&D website:

www.capitalrcd.org/boardmaterials



Welcome to Capital RC&D

HOME ABOUT US PROJECTS EVENTS LINKS EDUCATIONAL RESOURCES **MORE...**

Board Member Materials

The linked materials listed below are intended for use by our board of directors to ensure access to updated policies and reports.

Organizational Communication

- [2019 Audit Report](#)
- [2019 Form 990](#)
- [2019 Management Letter](#)
- [Capital RC&D 2019 Impact](#)
- [Elevator Speech](#)
- [Instagram Information](#)
- [Strategic Plan](#)

Legal Information

- [Articles of Incorporation](#)
- [IRS Determination Letter](#)
- [Bylaws](#)

Board of Directors Information

- [Board Member, Officer and Committee Descriptions](#)
- [Board Member Code of Ethics](#)

Financial Information

- [Financial Policy](#)
- [Procurement Policy](#)
- [Letter of Credit Policy](#)
- [Conflict of Interest Policy](#)
- [Fiscal Sponsorship Policy](#)

Operational Information

- [Personnel Policy](#)
- [Staff Position Descriptions](#)

Project Reports

- [South Mountain Partnership - Capacity Building Grant Final Report](#)
- [NE SARE Agroforestry Final Report](#)

Program Areas

- 1. Water – Quality Protection**
- 2. Land – Natural Resource Conservation**
- 3. Community Development**

Current Programs

Program	Project Balance
Rotational Grazing Promotion	
Chesapeake Bay Foundation	\$59,200
PA Grazing Lands Coalition	\$12,750
BMP Implementation	
Tillage/Cover crop survey (1.5 years remaining)	\$272,620
NFWF-CAP/BMP Project	\$312,798
Perry County Cover Crop Verification (spring 2024)	\$6,490
NRCS – 2020 Umbrella (1.5 years remaining)	\$1,558,296
NRCS Carbon Probe Demo (CIG Grant)	\$44,239
Miscellaneous	\$1,030

A close-up photograph of a person's hand holding a single stalk of green grass. The hand is positioned at the top center of the frame, with fingers gently gripping the stem. The background is a lush, green field of similar grass, slightly out of focus. The overall scene is bright and natural, suggesting an outdoor agricultural setting.

Program Resources: Grazing Support

- Technical Assistance for Rotational Grazing
 - Peer-to-peer farm consultations
 - Technical assistance for pasture walks and grazing groups
 - Support for PA Grazing Lands Coalition mini-grants in the CB watershed

Program Resources:

Financial Assistance

- Rotational grazing infrastructure grants
 - Competitive grants provide financial assistance
- Grazing plan development

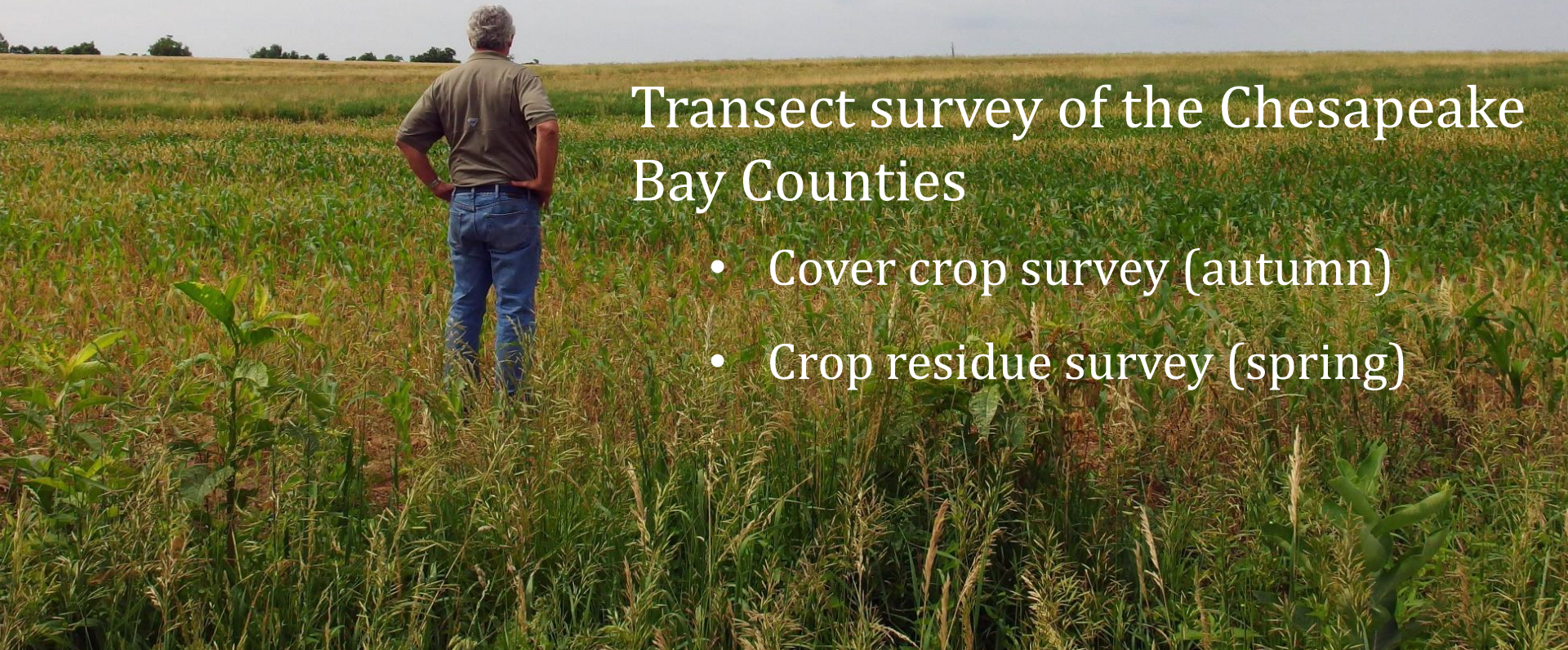


Program Resources: BMP Data Verification & Collection

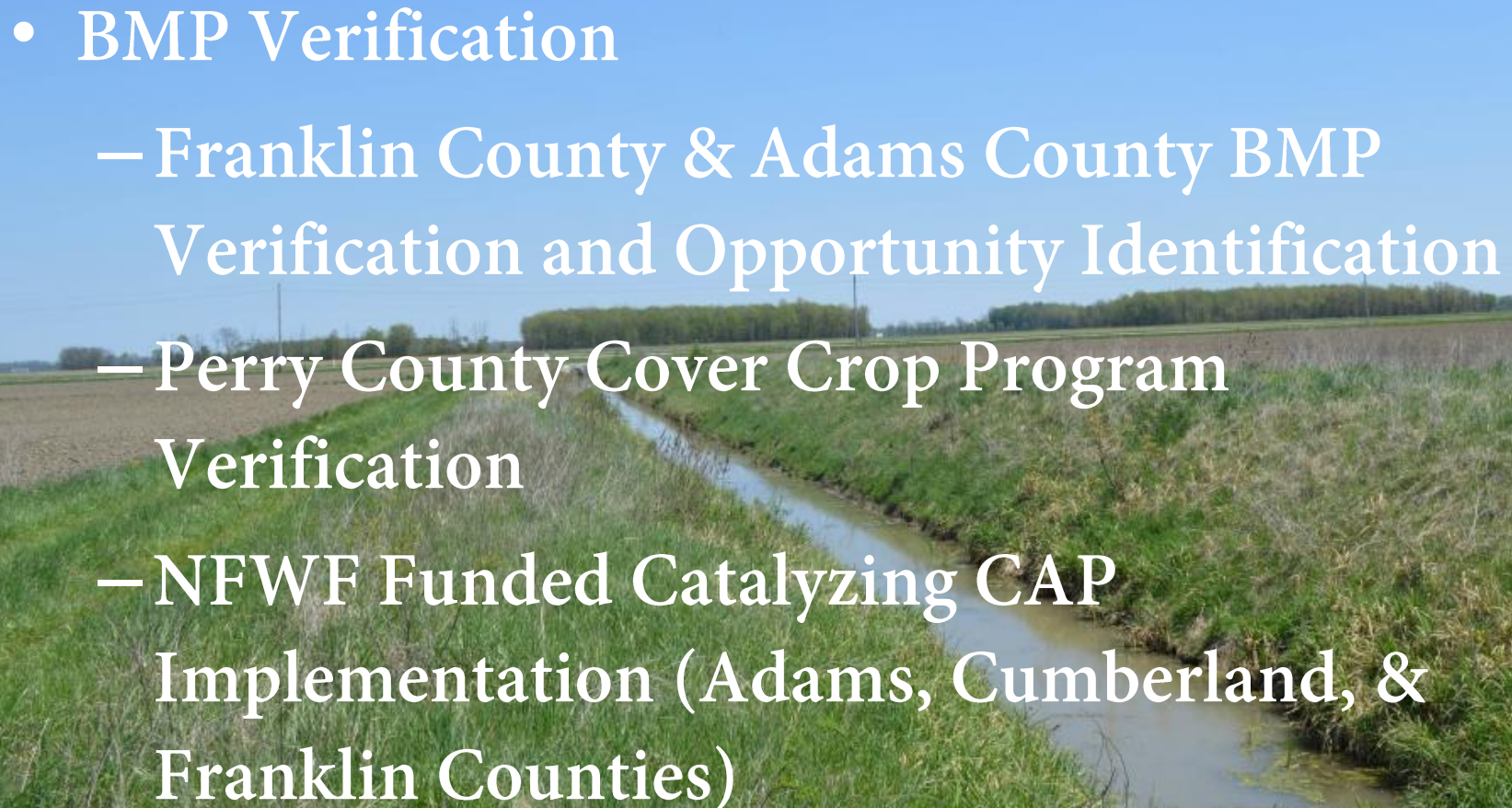
Annual Best Management Practice (BMP) Survey

Transect survey of the Chesapeake
Bay Counties

- Cover crop survey (autumn)
- Crop residue survey (spring)



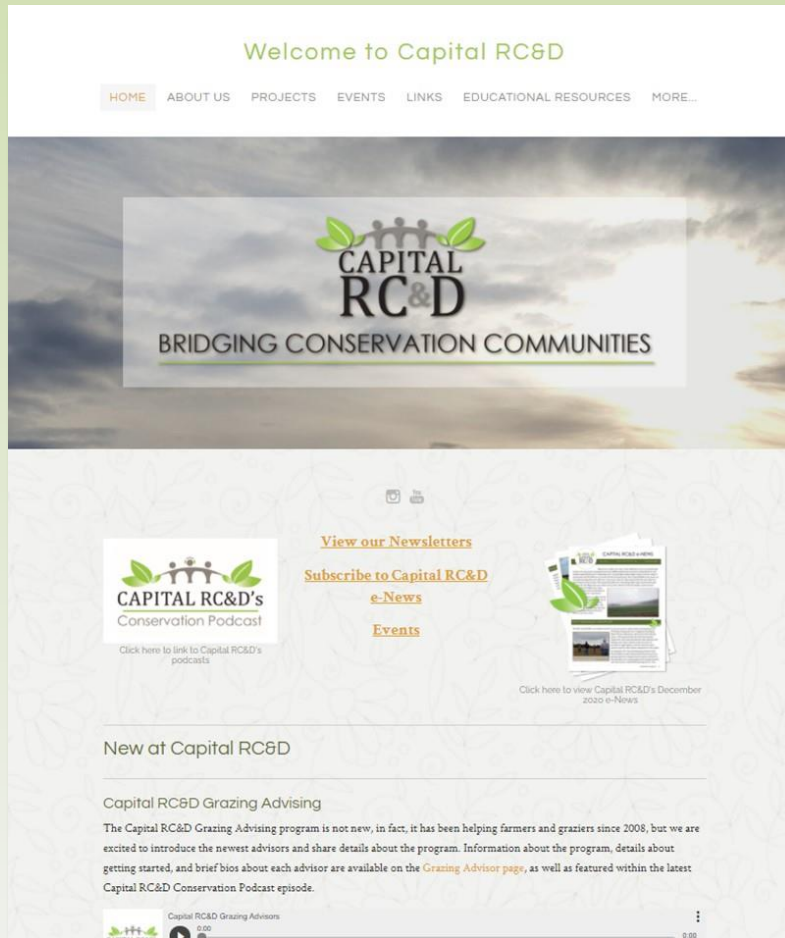
Program Resources: BMP Data Collection & Verification

- BMP Verification
 - Franklin County & Adams County BMP Verification and Opportunity Identification
 - Perry County Cover Crop Program Verification
 - NFWF Funded Catalyzing CAP Implementation (Adams, Cumberland, & Franklin Counties)
- 

Organizational Support

- Fiscal/Administrative support for volunteer organizations
 - Costs for the services charged on a hourly basis for ongoing activities
 - Grants management administrative fee of 10%
 - Current organizations include Pennsylvania Grazing Lands Coalition,

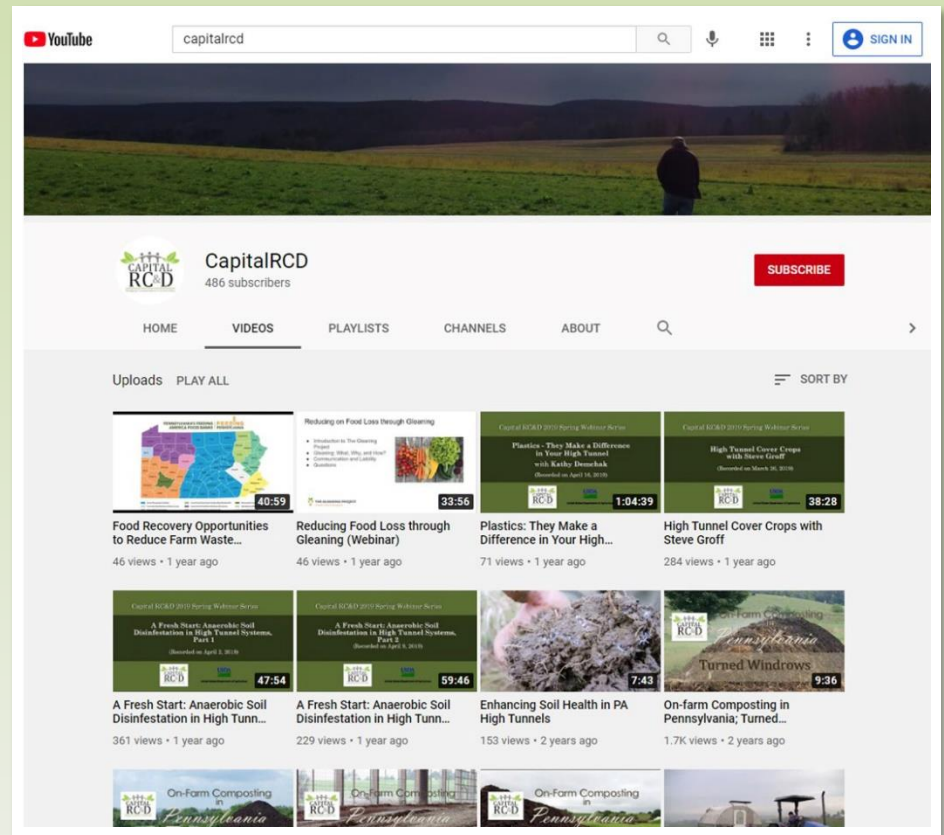
Resources for Education and Outreach



www.capitalrcd.org

Video & Webinar Resources

- Capitalrcd.org
 - Project pages
 - Educational Resources
- YouTube Channel
- Over 77 videos & webinars available



Newsletters & “E-announcements”



- Features include:
 - News & Updates
 - Capital RC&D Projects
 - Partner Projects
 - Upcoming Dates
- ***Submissions of stories, ideas, photos and dates are welcome***

Podcasts

Capital RC&D Conservation Podcast

- Interviews with conservation professionals
- Highlights people, projects, and issues
- Available on Capital RC&D website & various streaming services



PA GLC Graziers Grapevine

- Interviews with graziers and technical advisors
- Highlights best practices, techniques, and emerging industry topics
- Available on paglc.org & various streaming services



Capital RC&D Social Media



Instagram: Capital_rcd



Facebook: Capital RC&D



YouTube: CapitalRCD

Contact Us

Ann Basehore

Executive Director

abasehore@capitalrcd.org

717-241-4361



Vicki Burkholder, Program Administrator

vburkholder@capitalrcd.org

Cheryl Burns, Project and Outreach Manager

cburns@capitalrcd.org